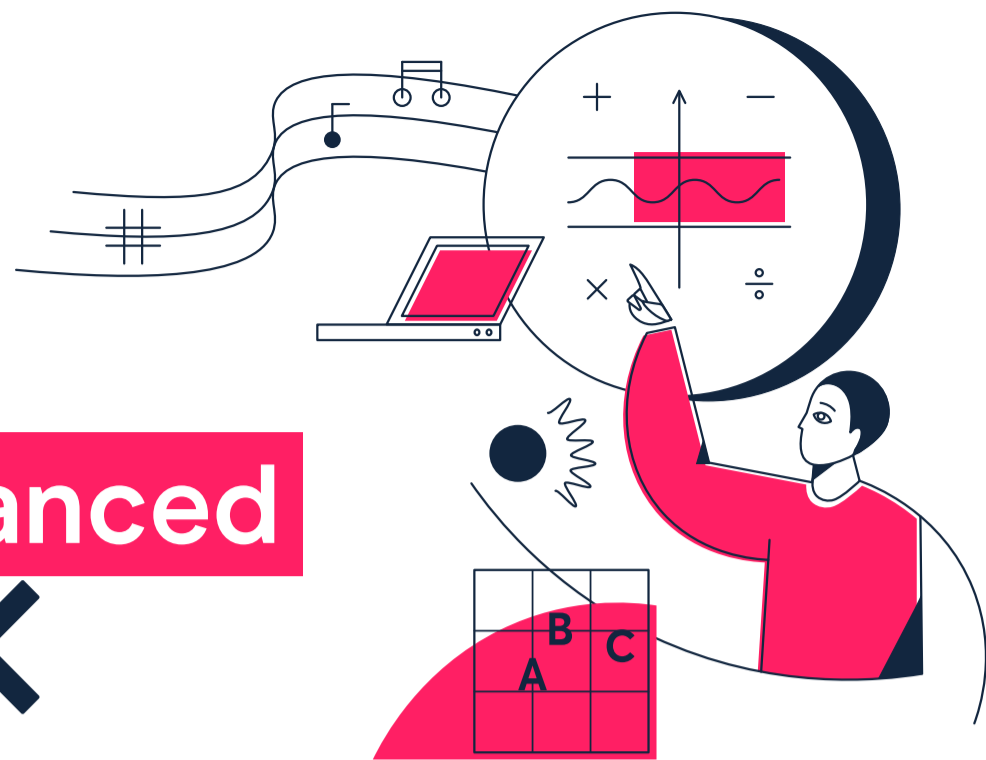


## Staffroom discussion prompts

# How broad and balanced is our curriculum? <



## Intent: what are we trying to achieve with our curriculum?

- > What are our curriculum objectives? What do we want pupils to be able to know and do by the time they leave?
- > How does our curriculum plan set out the sequence and structure of how we'll implement it?
- > How does our curriculum reflect national policy (for example, British values, or PSHE)?
- > How does it cater for disadvantaged and minority groups? How do we make sure these pupils aren't 'shut out' of pursuing subjects they wish to study because of too sharp a focus on exam results?
- > To what extent have we made the objectives clear? Does everybody know them?
- > Do we understand what our current curriculum practice is, and how we can improve it?
- > Have we identified any appropriate next steps (taking into account any impact from COVID-19)?

## Implementation: how do we deliver our curriculum?

- > How does our current curriculum match our intention (as above)?
- > What subjects are we not teaching?
- > How do the subjects we are teaching join together? What cross-curricular links are there (in particular in the development of literacy and numeracy)?
- > How are we encouraging progression as pupils move through the school?
- > How do we differentiate our curriculum for different ability groups?
- > Are subjects staffed appropriately? Are staff trained? Do subjects have adequate time and other resources?

## Impact: what difference is our curriculum making to pupils?

### For school leaders

- > How well are children learning the content outlined in the curriculum? How do we know?
- > How well are pupils prepared for their next stage of education or working life? Where do they go?
- > How do we know our curriculum is having an effect across all pupils, including those who are disadvantaged or have low attainment?

### For teachers

- > How well are key subject knowledge and skills consolidated before moving onto the next topic? How do we know?
- > How well-developed are pupils' learning habits and learning skills? How do we know?
- > How do we use evidence of pupils' learning to feed into our planning and adaptation of the curriculum?



Go to [thekeysupport.com/sl](https://thekeysupport.com/sl) for more discussion prompts and follow-up actions to take to make sure your curriculum is broad and balanced